

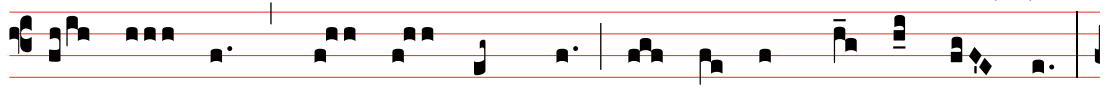
DOMINUM DIXIT

AD MISSAM IN NOCTE

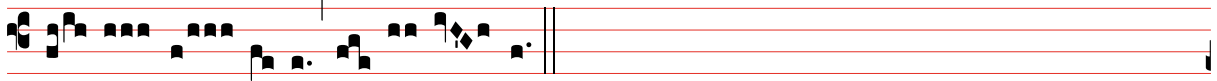
ANTIPHONA AD INTROITUM II

Ps.2,7. 7.2.8

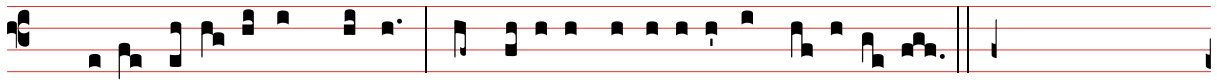
II
D



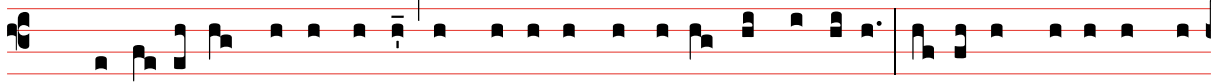
O- MI- NUS * dí- xit ad me: Fí- li- us me- us es tu,



e- go hó- di- e gé- nu- i te.



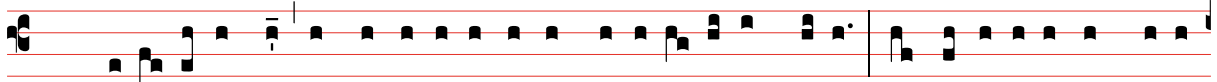
Ps. Qua-re fremu- é-runt gentes: * et pópu-li me-di-tá-ti sunt in-á-ni- a? Ant.



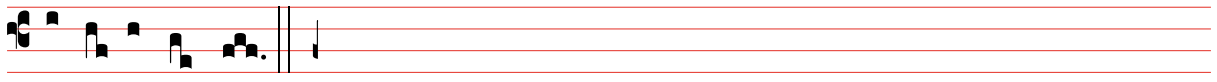
Ps. A-sti-té-runt re-ges terræ, et princi-pes conve-né- runt in unum advérsus Dómi-num, et



advérsus Chri-stum e- ius. Ant.



Ps. Póstu-la a me, et da-bo ti-bi gentes he-re-di-tá-tem tu-am, et possessi- ó-nem tu-am



térmi-nos ter-ræ.- Ant.