

IN NATIVITATE DOMINI



AD MISSAM IN NOCTE

Graduale Romanum, 1974

Kalenda

O c-ta-vo Ka-lendas ia-nu-a-ri-i. Lu-na N.

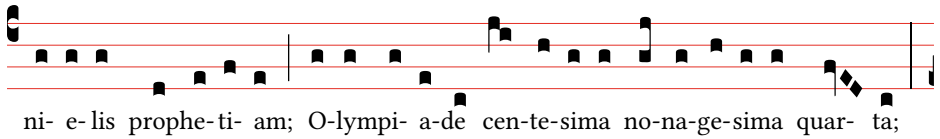
Innume-ris transac-tis sæ-cu-lis a cre-a-ti-o-ne mundi, quando in prin-ci-pi-o De-us cre-a-vit cæ-lum et terram et homi-nem forma-vit ad ima-gi-nem su-am; permul-tis e-ti-am sæ-cu-lis, ex quo post di-lu-vi-um

Al-tis-simus in nu-bi-bus arcum po-su-e-rat, signum fœde-ris et pa-cis;

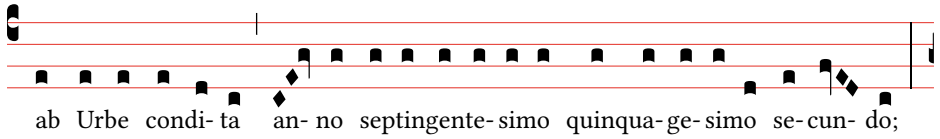
a migra-ti-o-ne Abra-hæ, pa-tris nostri in fi-de, de Ur Chaldæ-o-rum

sæ-cu-lo vi-ge-simo primo; ab egressu po-pu-li Isra-ël de Ægypto, Moy-se du-ce, sæ-cu-lo de-cimo ter-ti-o; ab uncti-o-ne Da-vid in re-gem,

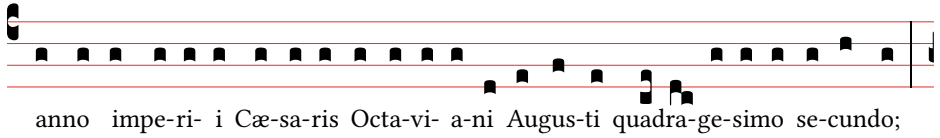
anno cir-ci-ter mil-le-simo; hebdoma-da se-xa-ge-sima quinta, iuxta Da-



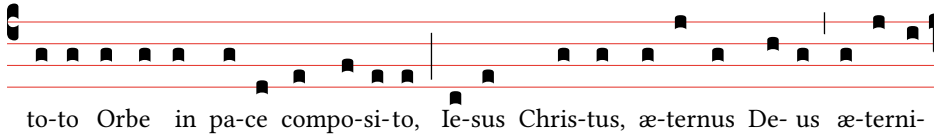
ni e-lis prophe-ti- am; O-lympi- a-de cen-te-sima no-na-ge-sima quar- ta;



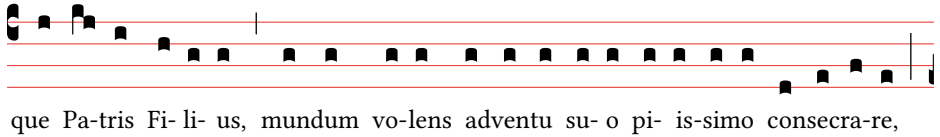
ab Urbe condi- ta an- no septingente-simo quinq-ua-ge-simo se-cun- do;



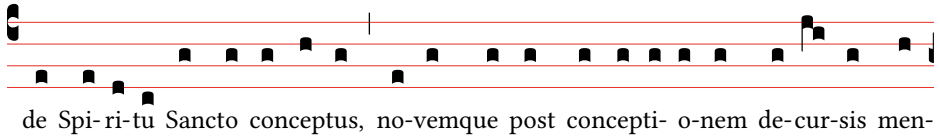
anno impe-ri- i Cæ-sa-ris Octa-vi- a-ni Augus-ti quadra-ge-simo se-cundo;



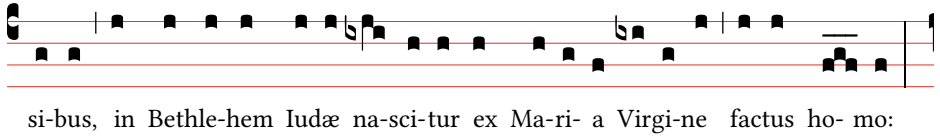
to-to Orbe in pa-ce compo-si-to, Ie-sus Chris-tus, æ-ternus De-us æ-terni-



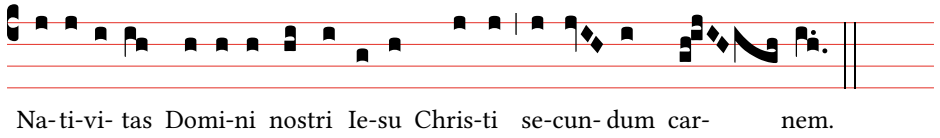
que Pa-tris Fi-li- us, mundum vo-lens adven-tu su-o pi- is-simo consecra-re,



de Spi-ri-tu Sancto conceptus, no-ven-que post concep-ti o-nem de-cur-sis men-



si-bus, in Bethle-hem Iudæ na-sci-tur ex Ma-ri- a Virgi-ne factus ho- mo:

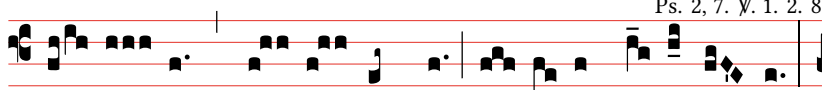


Na-ti-vi- tas Domi-ni nostri Ie-su Chris-ti se-cun-dum car- nem.

Antiphona ad Introitum

Ps. 2, 7. Ψ. 1. 2. 8

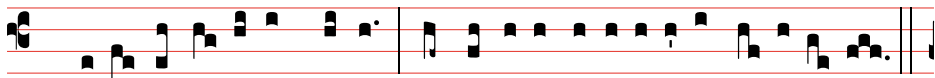
II
D



O- MI- NUS * dí- xit ad me: Fí- li- us me- us es tu,



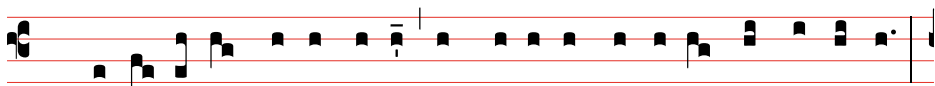
e- go hó- di- e gé- nu- i te.



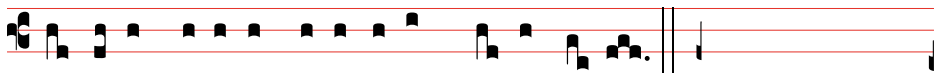
Ps. Qua- re fre- mu- é- runt gentes: * et pó- pu- li me- di- tá- ti sunt in- á- ni- a?



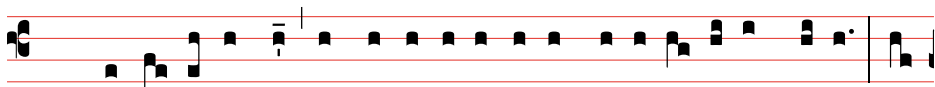
Ant. Do- mi- nus



Ps. A- sti- té- runt re- ges terræ, et princi- pes conve- né- runt in u- num



ad- vérsus Dómi- num, et advérsus Chri- stum e- ius. *Ant.*



Ps. Pó- stu- la a me, et da- bo ti- bi gentes he- re- di- tá- tem tu- am, et



possessi- ó- nem tu- am térmi- nos ter- ræ.- *Ant.*

Kyrie VIII

(XV-XVI sec.)

K^v Y-ri- e, * e- lé- i- son. *bis*
Chri- ste, e- lé- i- son. *bis* Ký- ri- e,
e- lé- i- son.
Ký-ri- e * ** e- lé- i-son.

Gloria VIII

(XVI sec.)

G^v Ló-ri- a in excél- sis Dé- o. Et in térra pax homí- ni- bus
bónae vo- luntá- tis. Laudá- mus te. Be- ne- dí- cimus te. A- do- rá- mus te.
Glo- ri- fi- cámus te. Grá- ti- as á- gimus tí- bi propter mágnam gló- ri- am tú- am.
Dómi- ne Dé- us, Rex cae- lés- tis, Dé- us Pá- ter omní- po- tens.
Dómi- ne Fí- lí- u- ni- gé- ni- te Jé- su Chrís- te. Dómi- ne Dé- us, Agnus Dé- i,

Fí-li-us Pá-tris. Qui tól-lis peccá-ta mún-di, mi-se-ré-re nó-bis.

Qui tól-lis peccá-ta mún-di, súsci-pe depre-ca-ti-ó-nem nós-tram.

Qui sé-des ad délixte-ram Pá-tris, mi-se-ré-re nó-bis. Quó-ni-am tu só-lus

sánctus. Tu só-lus Dó-mi-nus. Tu só-lus Al-tís-si-mus, Jé-su Chrí-ste.

Cum Sáncto Spí-ri-tu, in gló-ri-a Dé-i Pát-ris. A-men.

Graduale: Tecum principium

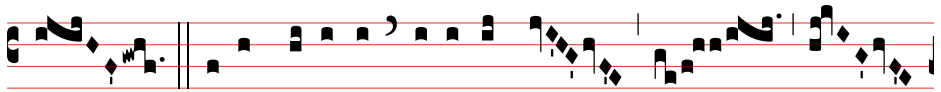
Ps. 109, 3. V. 1

T GR. II E-cum princí-pi-um * in di-e vir-tú-

tis tu-ae : in splendó-ri-bus sanctó-

rum, ex ú-te-ro an-te lu-cí-

fe-rum gé-nu-i-te.



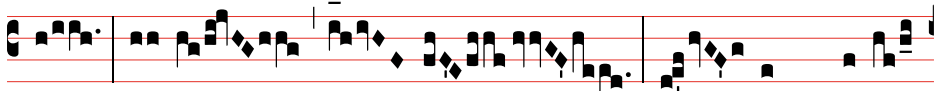
Ψ. Di-xit Dómi-nus Dómi-no me-



o: Se- de a dextris me-



is: do- nec po- nam in-i-mí- cos tu- os



sca- bél- lum pe- dum * tu- ó-

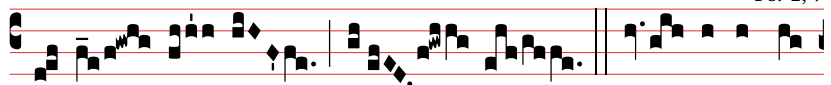


rum.

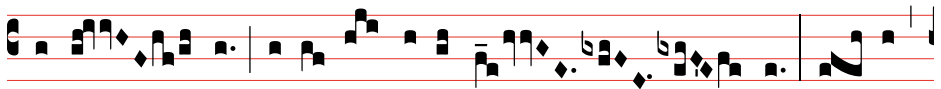
Versus Alleluatico

Ps. 2, 7

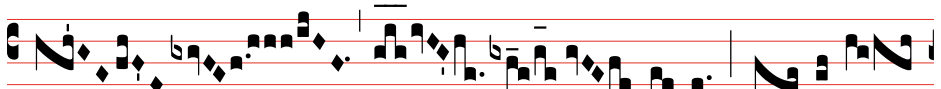
VIII
A



L- le- lú- ia. * ij. Ψ. Dó- mi-nus di-



xit ad me: Fí- li- us me- us es tu, e- go



hó- di- e * gé- nu- i



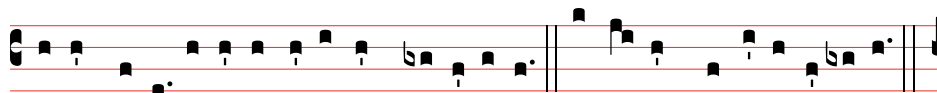
te.

Credo III

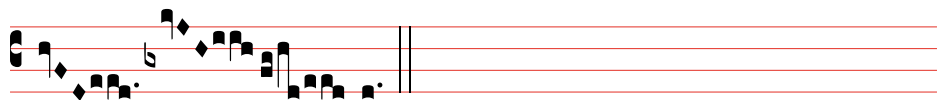
XVII s.

C ^V Re- do in u- num De- um, Patrem omni- po- téntem, fac-
tó- rem cæ- li et terræ, vi- si- bí- li- um óm- ni- um, et invi-
si- bí- li- um. Et in u- num Dómi- num Je- sum Chri- stum,
Fí- li- um De- i un- i- gé- ni- tum. Et ex Patre na- tum
ante ómni- a sæ- cu- la. De- um de De- o, lumen de lúmi- ne, De- um ve-
rum de De- o ve- ro. Gé- ni- tum, non fac- tum, consubstanti- á- lem Pa- tri:
per quem ómni- a fac- ta sunt. Qui propter nos hómi- nes, et propter
nostram sa- lú- tem descéndit de cæ- lis. Et incarná- tus est de Spí-
ri- tu Sancto ex Ma- rí- a Vírgi- ne: Et homo factus est. Cru- ci-

fí- xus ét- i- am pro no- bis: sub Pónti- o Pi- lá- to passus, et se-
 púl- tus est. Et re- surre- xit tér- ti- a di- e, se- cún- dum Scrip- tú- ras.
 Et ascéndit in cæ- lum: se- det ad dexte- ram Pa- tris.
 Et í- te- rum ventú- rus est cum gló- ri- a, ju- di- cá- re vi- vos et mórtu-
 os: cu- ius regni non e- rit fi- nis. Et in Spí- ri- tum Sanctum, Dómi- num,
 et vi- vi- fi- cántem: qui ex Patre Fi- li- óque pro- cé- dit.
 Qui cum Patre et Fí- li- o simul a- dor- á- tur, et conglo- ri- fi- cá- tur:
 qui lo- cú- tus est per Prop- hé- tas. Et u- nam sanctam cathó- li- cam
 et a- postó- li- cam Ecclé- si- am.
 Confi- te- or u- num bap- tí- sma in remis- si- ó- nem pecca- to- rum.



Et exspecto re-surre-cti- o-nem mortu- o-rum. Et vi- tam ventú-ri sæ-cu-li.

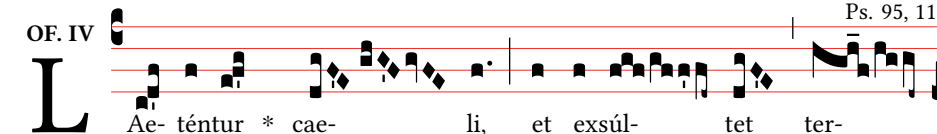


A- men.

Antiphona ad Offertorium

OF. IV

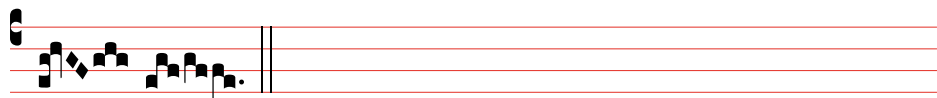
Ps. 95, 11



L Ae- téntur * cae- li, et exsúl- tet ter-



ra an- te fá- ci- em Dó- mi- ni: quó- ni- am

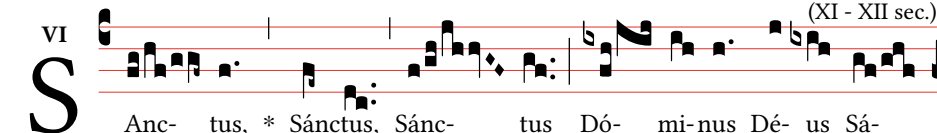


ve- nit.

Sanctus VIII

VI

(XI - XII sec.)



S Anc- tus, * Sánctus, Sán- tus Dó- mi- nus Dé- us Sá-



ba- oth. Plé- ni sunt cae- li et tér- ra gló- ri- a tú- a.



Ho- sán- na in excél- sis. Be- ne- díc- tus qui vé- nit in nó- mi- ne



Dó- mi- ni. Ho- sán- na in ex- cél- sis.

Agnus Dei VIII

VI (XV sec.)



- gnus De- i, * qui tol-lis peccá-ta mun-di : mi-se-ré-re no-

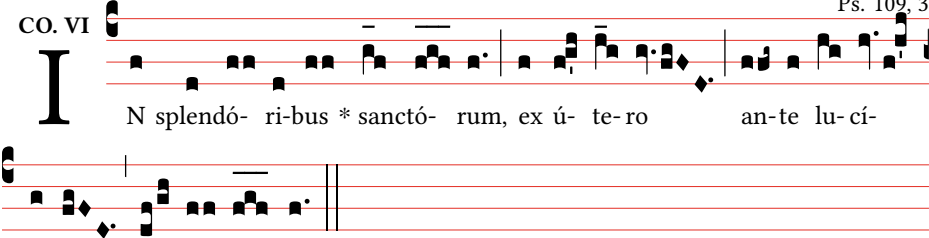
bis. Agnus De- i, * qui tol- lis peccá-ta mun-di : mi-se-ré-re no-



bis. A- gnus De- i, * qui tol-lis peccá-ta mun-di : do-na no-bis pa- cem.

Antiphona ad communionem

CO. VI Ps. 109, 3



N splendó- ri-bus * sanctó- rum, ex ú- te-ro an-te lu-cí-

fe-rum gé- nu- i te.

Ps. 109, 1a, 1b-5, 7



Di- xit Dòmi-nus Dòmi-no me-o: * Se-de a dextris me- is.

- Donec ponam *inimicos tuos* * scabellum *pedum tuorum*.
- Virgam virtutis tuae emittet *Dominus* ex *Sion*: * dominare in medio *inimicorum tuorum*.
- Tecum principium in die virtutis tuae in splendoribus *sanctorum*: * ex utero, ante luciferum, *genui* te.

- Juravit Dominus, et non *poenitebit eum*: * Tu es sacerdos in aeternum secundum *ordinem Melchisedech*.
- Dominus *a dextris tuis*; * confregit in die irae suae reges.
- De torrente *in via bibet*; * propterea *exaltabit caput*.

Ite - Missa VIII

The image shows two staves of musical notation for the 'Ite - Missa VIII' section. The first staff contains the melody for the text 'I- te, missa est.' and the second staff contains the melody for 'R. De- o grá-ti- as.' The notation is in a simple, square-note style with a single clef and a key signature of one flat.

I- te, missa est.

R. De- o grá-ti- as.

Alma Redemptoris Mater (Tonus simplex)

The image shows four staves of musical notation for the 'Alma Redemptoris Mater (Tonus simplex)' section. The notation is in a simple, square-note style with a single clef and a key signature of one flat. The text is written below the staves, with some words in all caps and italics.

ĀL-ma * Re-demptó-ris Ma-ter, quæ pérvia cæ-li porta ma-nes, Et stel-la
 ma-ris, succúrre ca-dénti súrge-re qui cu-rat pó-pu-lo : Tu quæ ge-nu-í-sti,
 na-tú-ra mi-ránte, tu-um sanctum Ge-ni-tó-rem : Virgo pri-us ac posté-ri-
 us, Gabri-é-lis ab o-re sumens il-lud A-ve, pecca-tó-rum mi-se-ré-re.